

# Canyon Switching Station Plan



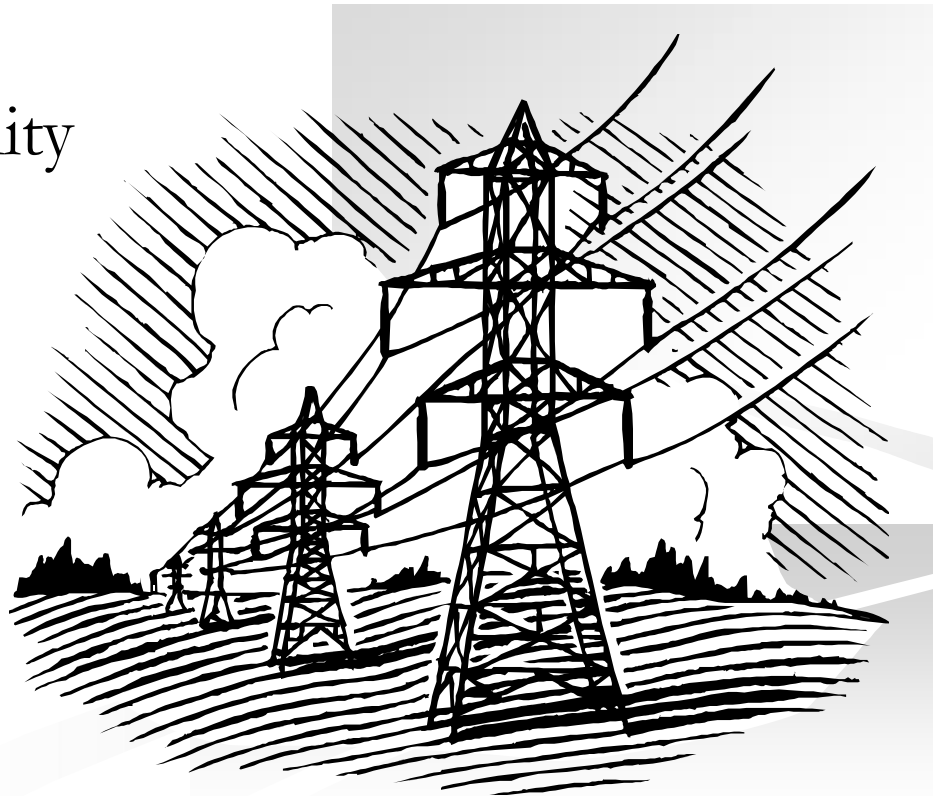
Presented by:

Tuan Tran, P.E.

T&D System Planning and Operations Supervisor

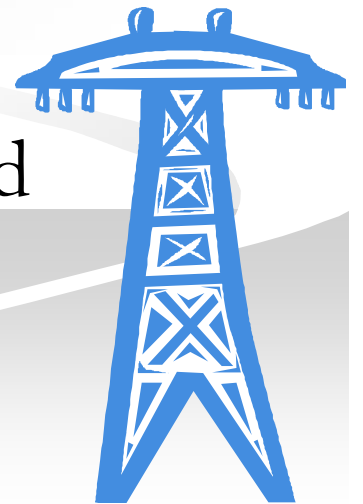
# Purpose of Canyon Switchyard

- Increase the Robustness of Tacoma Power's Transmission system
  - Adds Capacity
  - Improves Reliability



# Current Problems with the LaGrande Lines

- LaGrande lines #1 & #2 are 64 years old
- Least reliable transmission lines in Tacoma Power's system
- During the winter season, peak loads typically exceed the capacity of the LaGrande lines if one of the two lines is out of service
- Serve an area that currently has a high load growth rate

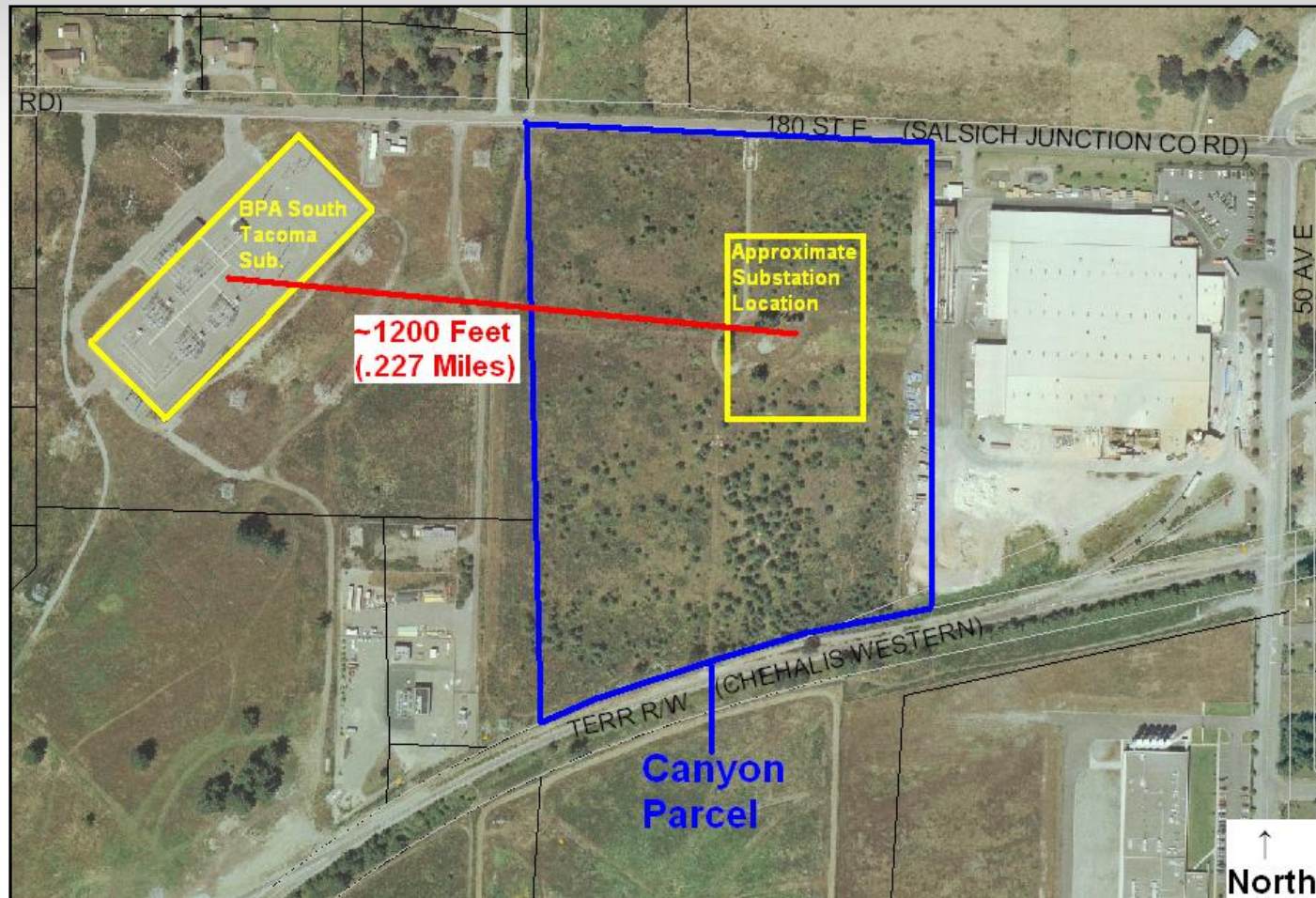


# Alternatives Considered

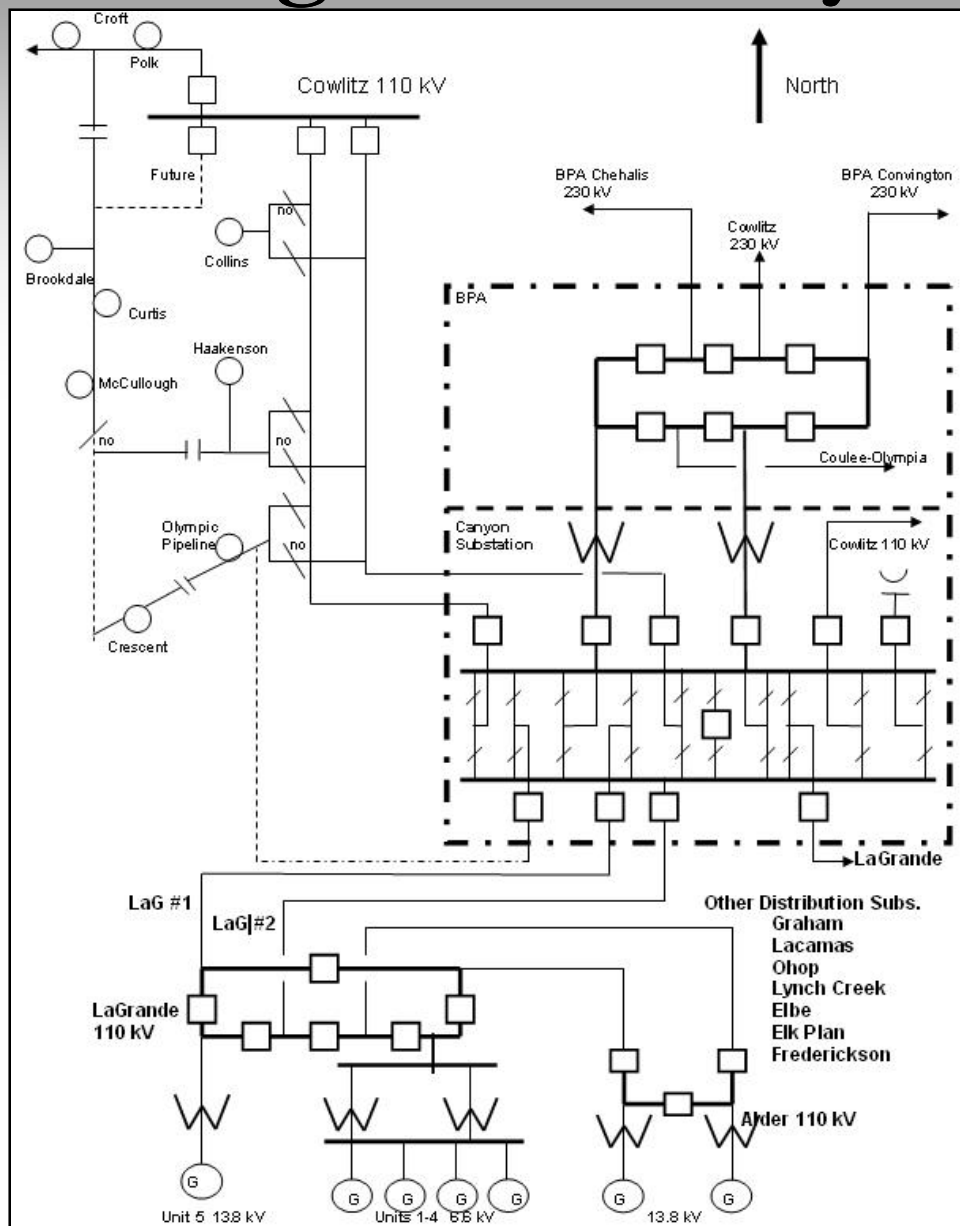
1. Reconductor or uprate the LaGrande Lines
2. Build the Canyon switching station to interconnect with the BPA South Tacoma Substation
3. Construct a 3<sup>rd</sup> circuit from Cowlitz to Canyon



# Location of Canyon Switching Station



# One-Line Diagram of Canyon Project



# Canyon Project Schedule

- BPA completed an Impact Study and found no impact to its transmission system
- BPA is currently doing a Facility Study, which should be completed in November 2007
- Entire project is anticipated to be completed by 2012

